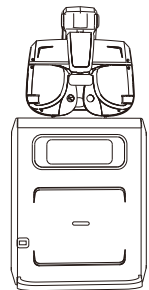


ACP-1000

TABLETOP REFRACTION SYSTEM



ACP-1000

Specifications:	
Functions & corresponding parameter	
Chart:	33 Selections
Fixing distance:	0.2m
Measure distance:	5m
Shade:	Separate, horizontal, vertical
Filter:	Red/Green
Chart control:	By Phablet or view tester
Dimensions for chart window:	210(W)×80(H)mm
Lamp-house:	LCD or LED
Power source:	Main body: AC100-240V, 50/60Hz,
Main body dimensions:	450(W)×555(H)×470(D)mm
	20kg



ACP-1000

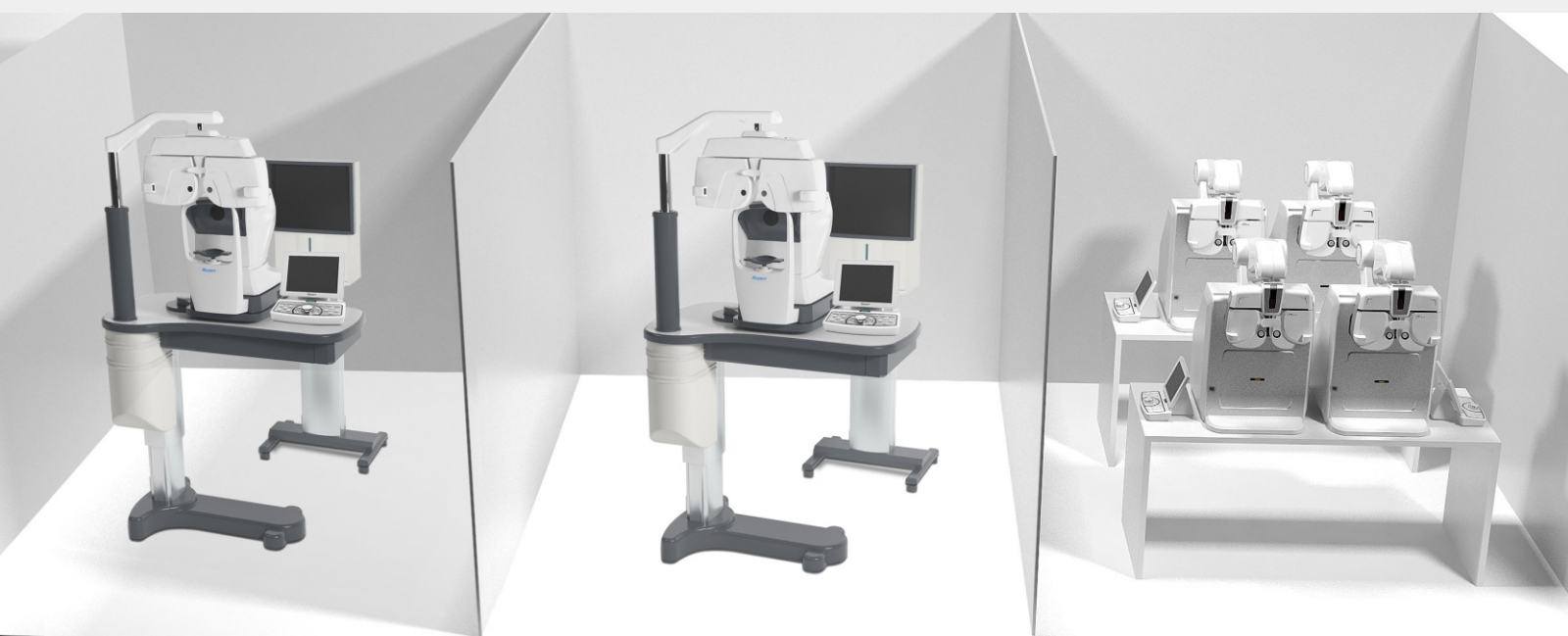
We believe every sqm of your room is valuable, so space-saving is important!
ACP1000 focus on improving professional eye testing feeling and value



ACP1000 TABLETOP REFRACTION SYSTEM

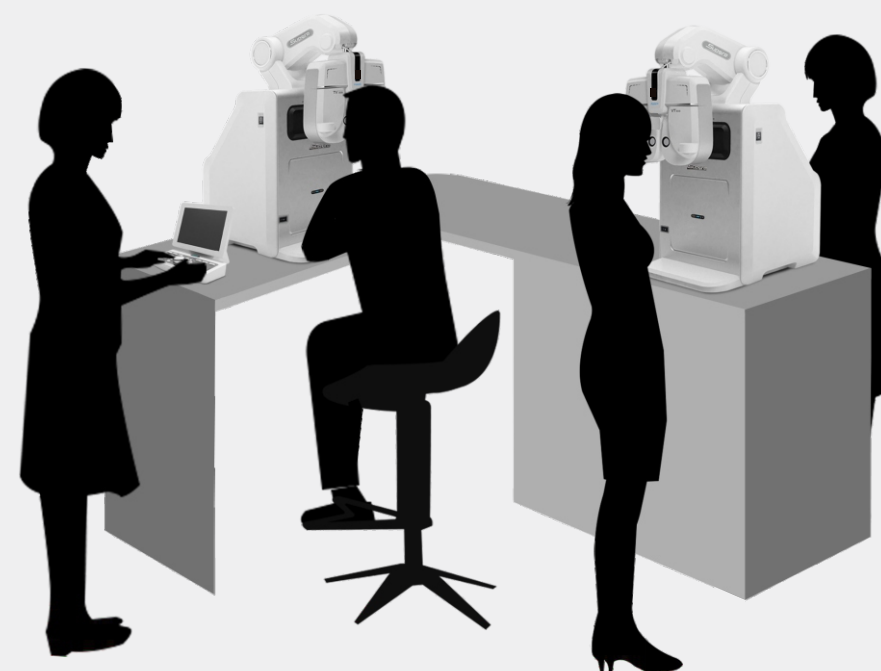
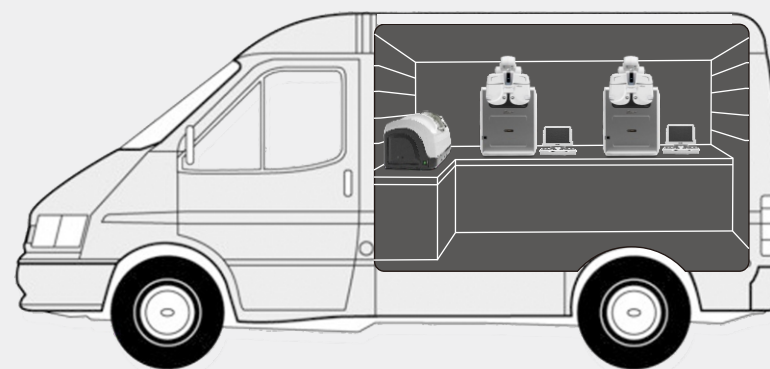
**SAVE
YOUR
SPACE**

Most space-saving refraction unit for convenient use
Compact appearance, sophisticated design.



ACP-1000 TABLETOP REFRACTION SYSTEM

Operation more freely



Compact footprint

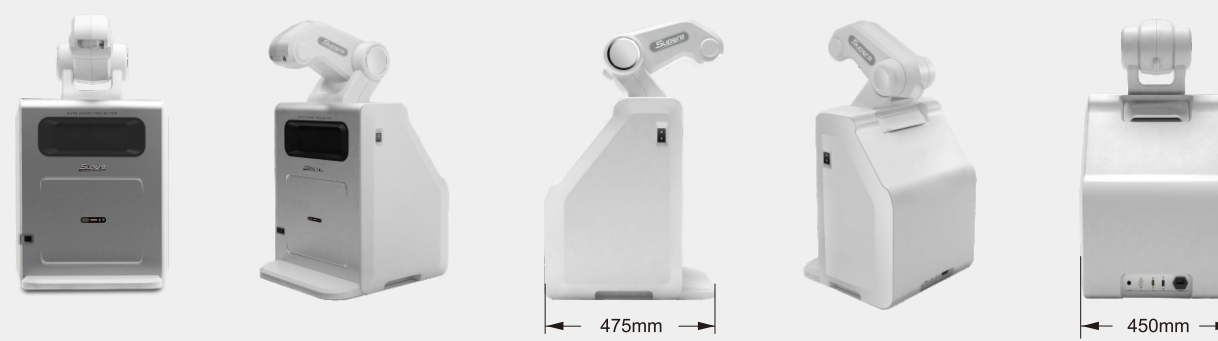
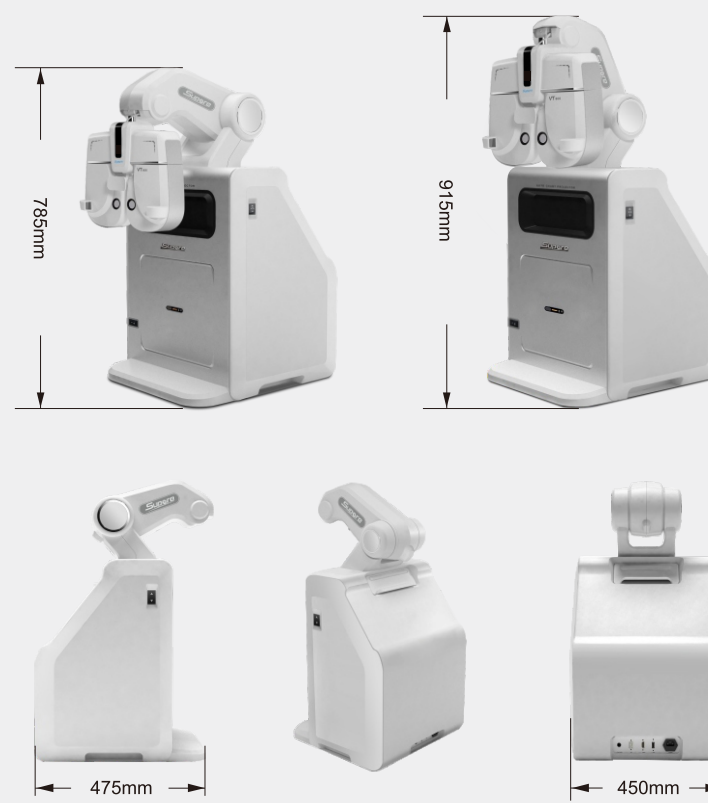


Chart Type:

- Regular chart (E chart, C chart, Number chart, Letter chart, Children chart)
- Polarized chart have all turned to Red-green chart
- Reg-green balance and Red-green polarized chart all can be adjusted to fit the Reg-green lenses of Phoropter
- Grey scale of chart can be adjusted; background brightness can be adjusted
- Chart distance can be adjusted

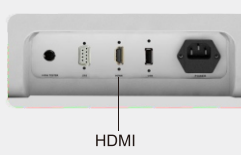
Control part:

- Infrared remote control
- VT series keyboard control
- Port reserved for voice input



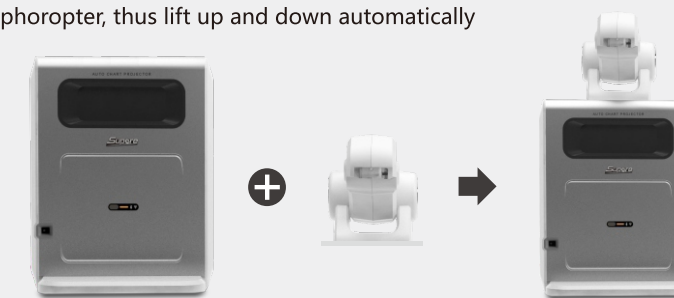
Output Part:

- HDMI output, can connect the outside display device, and can also output chart separately.

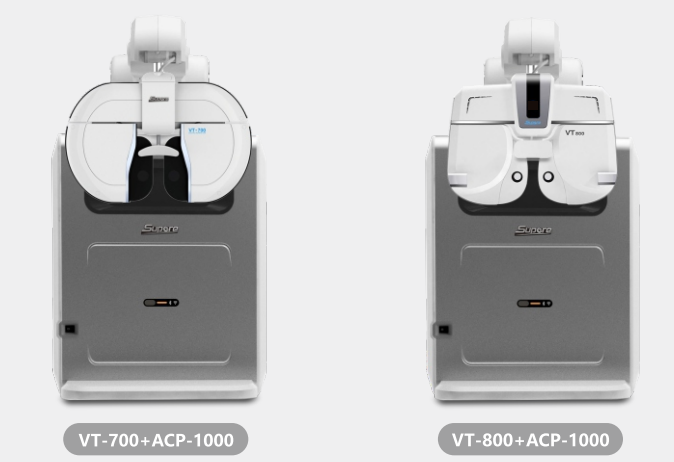


Special Features:

- Optional accessory arm, can load VT-700/800 phoropter, thus lift up and down automatically



- Phoropter and chart combined together so as to save space



ACP-1000 Chart Type

	far	Near
Number	0.05-1.5	0.1-1.0
Tumbling E	0.05-1.5	0.1-1.0
Number	0.05-1.5	0.1-1.0
Landolt C	0.05-1.5	0.1-1.0
Children	0.1-1.0	—
Horizontal mask	—	—
Vertical mask		—
Dot mask	□	—
Astigmatism clock dial		—
Red-green		—
Red-green		—
Phoria with fixation point		—
Schober		—
Vertical coincidence		—
Worth four dot		—
Dots		—
Cross grid		—
Vertical coincidence		—
Phoria		—
Fixation point		—
Binocular balance		—
Stereo		—